



LISEGA

A BUHLMANN COMPANY

LISEGA catalog V3 and plugin V4 for Smart3D

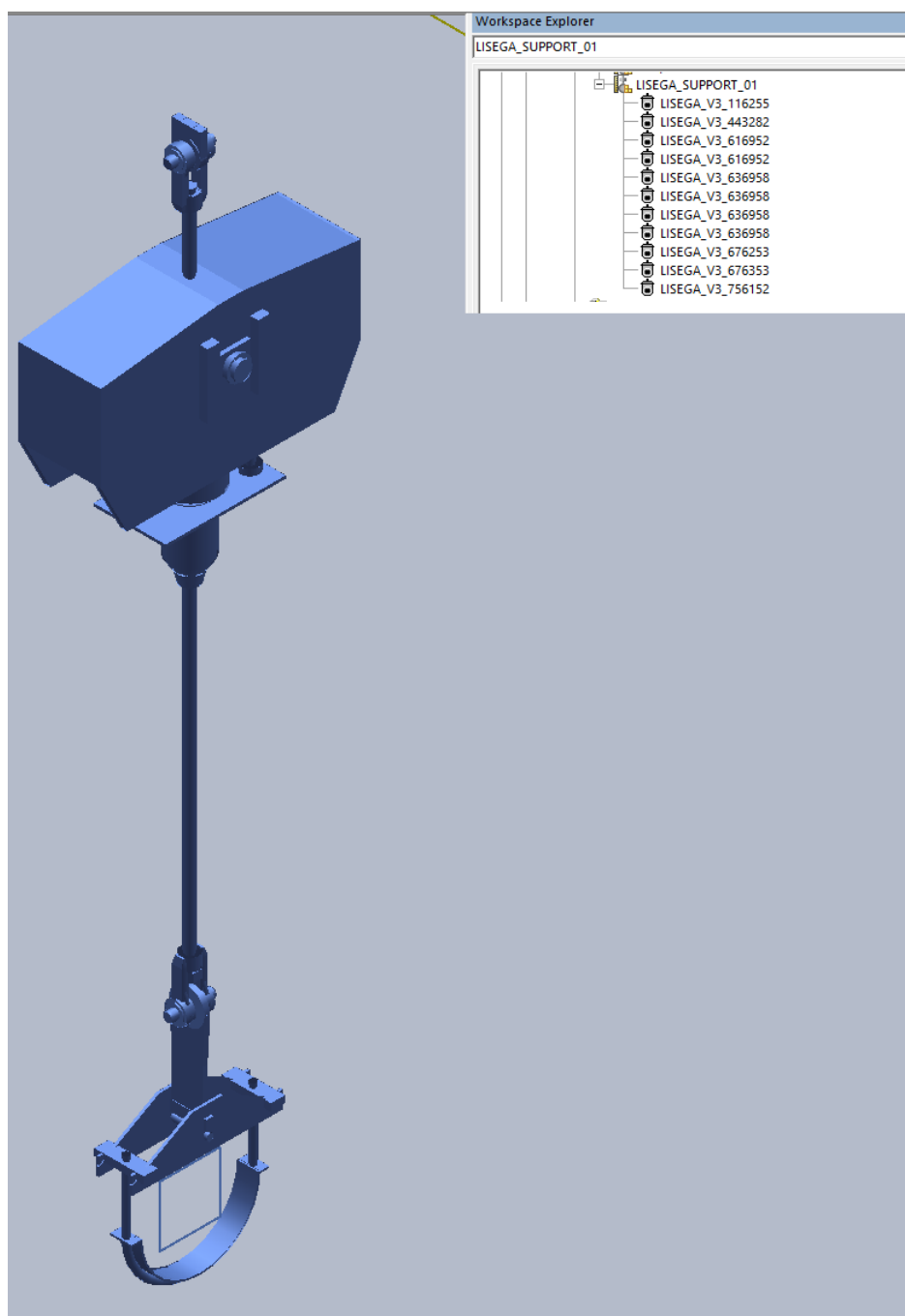


Table of content

Pre-Requisites.....	3
Installation.....	3
Smart3D catalog view - LISEGA Catalog	3
LISEGA Smart3D Hanger and Support plugin	4
Plugin Configuration dialog	4
Plugin attributes	5
Additional support attributes.....	5
Additional part attributes.....	5
Plugin usage.....	7
Open configuration dialog.....	7
Plugin configuration	7
Execute the plugins	7
LICAD interactive	7
L3D file import.....	7
File exchange	7

Pre-Requisites

Smart3D must be installed and configured.

This catalog and H&S plug in is compatible with Smart3D V 13.0, 13.1 and V 14.0

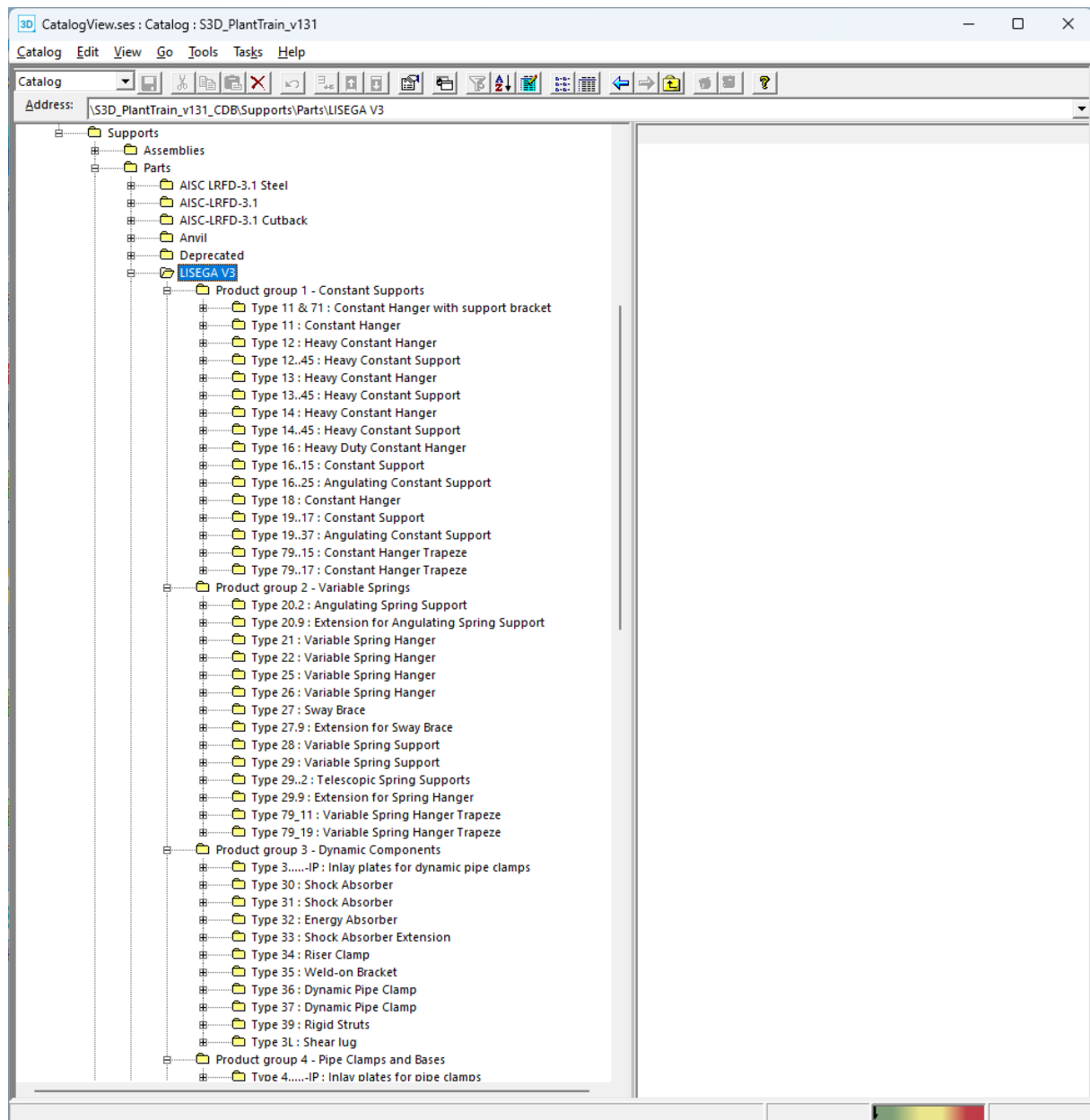
Installation

See Installation instructions in “Lisega Smart3D catalog and HS plug-in installation (V 4.0).pdf”

Smart3D catalog view - LISEGA Catalog

Our whole catalog is available after bulkload under the tree

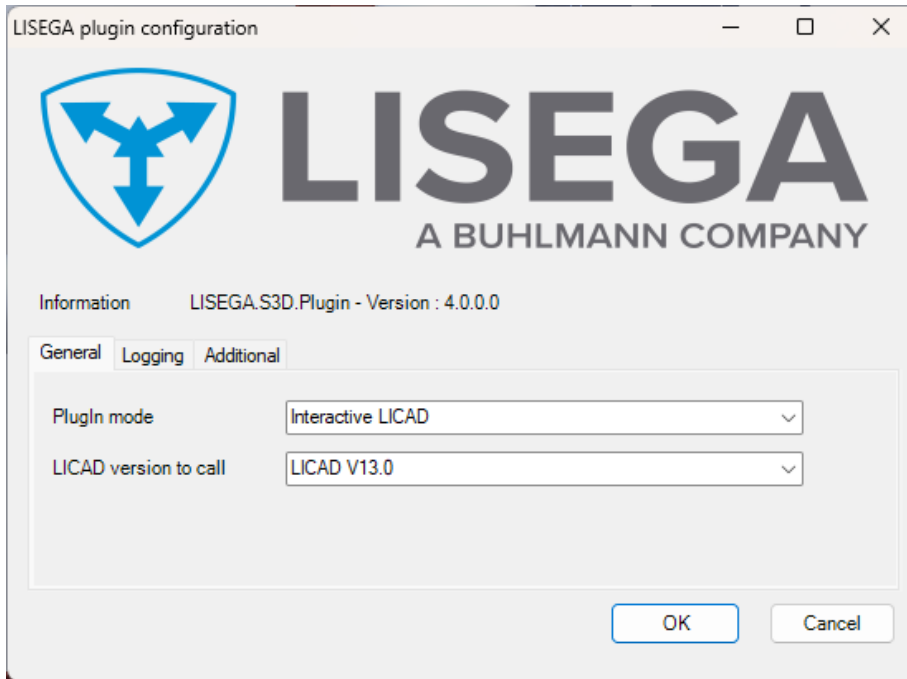
“<Catalog database>\Supports\Parts\LISEGA V3”:



LISEGA Smart3D Hanger and Support plugin

Plugin Configuration dialog

The plugin has three operation modes. It is possible to select one of these modes in the plugin configuration dialog.

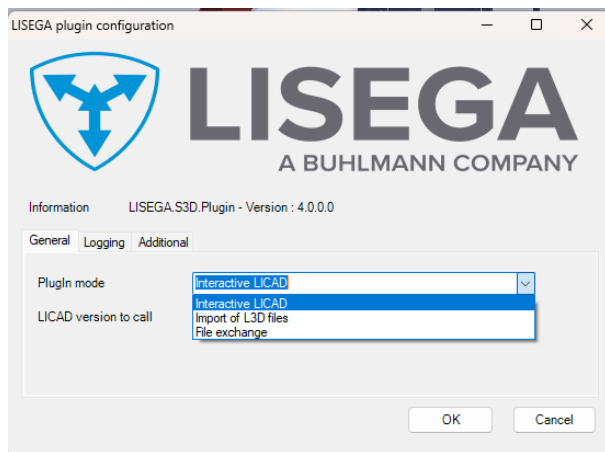


This new plugin has three operation modes:

- Interactive LICAD
- Import of L3D files
- File exchange

NOTE: The mode „Interactive LICAD“ is only available, if LICAD is installed on the machine where Smart3D is installed.

Here an example, where LICAD is not installed. Only the two other modes can be selected.

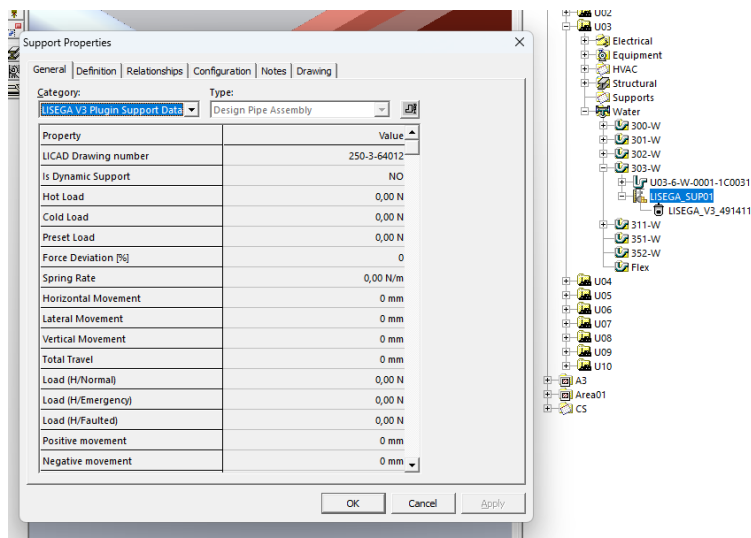


Plugin attributes

The plugin sets the additional attributes when a LISEGA support is placed.

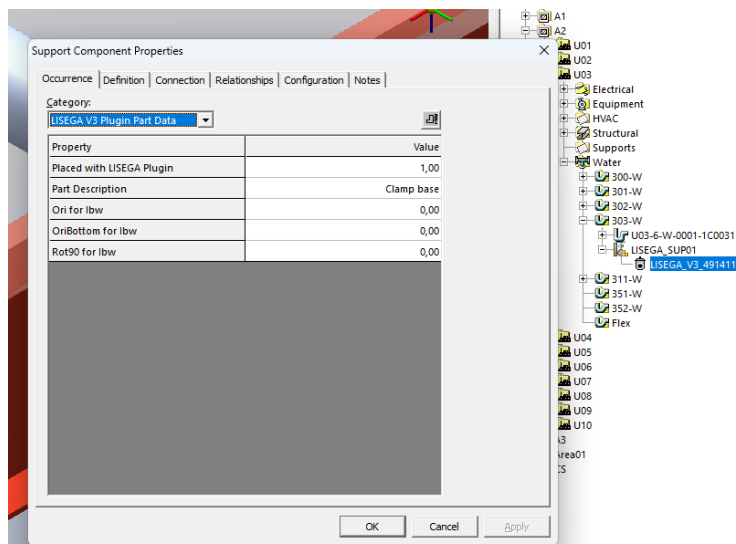
Additional support attributes

The Designed Support itself has these additional attributes after a LISEGA support was placed



Additional part attributes

Each part of a LISEGA support has these additional attributes.



Plugin usage

Open configuration dialog

The Smart3D functionality to show the configuration dialog of the actual activated plugin is available when Holding down one of the following keys <Ctrl>, <Shift>, <Alt> of <AltGr> and then clicking on the button “Start 3rd Part App” in “Hanger and Support” task.

HINT: Without holding down one of the mentioned keys the plugin is called when clicking on the button “Start 3rd Part App”!

Plugin configuration

The plugin has three available modes. Only one of these three modes can be activate at a time. The plugin configuration dialog is used to the select the active mode.

- LICAD interactive
- L3D file import
- File exchange

Execute the plugins

LICAD interactive

The plugin starts directly LICAD and the available data (pipe diameter, pipe center, ...) is send to LICAD. LICAD interprets the received data and shows it in the form.

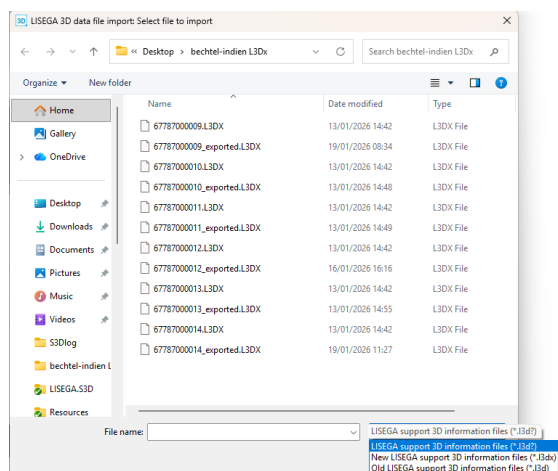
L3D file import

IMPORTANT NOTE:

LICAD 2026 creates now L3DX files. The plug in can read both file types (.L3DX / .L3D).

The plugin will import a LISEGA support into the model with the help of an L3D file. The L3D contains information about the used parts, so that the plugin can place these parts. LIESGA Pipe Support Design program LICAD generates these L3D files on demand.

The plugin will show a file open dialog to select the corresponding L3D file. After clicking the button “Open” in the file dialog, the dialog is closed and Smart3D creates the pipe support assembly by processing the file and placing the parts defined in the L3D file.



File exchange

In general, this is only a special “L3D file import” with a S3D data export in front.

The plugin creates a file that contains some data from the model (e.g.: pipe diameter, pipe temperature, position of pipe center and, if available, the position of the supports connection point).

After that, the plugin will wait for a L3D file stored in the same folder with an identical file name (only extension is exchanged). A timeout can be set, so that the plugin is able to cancel the operation, if the L3D file is not available within the specified timeframe (timeout).

This mode can be used for example when LICAD and Smart3D are not installed on the same machine.

The file generated by the plugin can be read in into LICAD manually or a program/script on the client machine can monitor a folder for new files and will start LICAD with parameters when a file was created.

HINT: An example PowerShell script is shipped with the LISEGA catalog and plugin installation package!